

PROXXON

New Products 2014



Tools with Character!



The new MICROMOT 230/E



With a diameter of 37mm and just 270g it offers convenient handling second to none in its class.



For drilling, milling, grinding, polishing, brushing, cutting and engraving. The extremely slim housing of glass-fibre reinforced POLYAMIDE with a soft component grip area enables the unit to be handled with two fingers (pen grip).

Balanced, low noise special DC motor with high life expectancy. The maximum speed of 21,500rpm can be continuously reduced to 6,500rpm through full-wave electronics. Offering nearly the same torque also in the lower speed range. This is especially important for micro drilling, brushing and polishing. Ground, ball-bearing spindle. High quality MICROMOT steel collets: Even the smallest shafts are accurately clamped. No rattling or vibrating of bits and cutters.

Spindle for tool exchange can be locked at the push of a button. 20mm collar for use in MICROMOT drill stands and horizontal stands. Includes MICROMOT steel collets (1 each of 1.0 – 1.5 – 2.0 – 2.4 - 3.0 and 3.2mm).



Technical data:

220 – 240 V. 50Hz. 80W. 6,500 – 21,500rpm. Weight 270g. Class 2 insulation.

NO 28 440

Note:

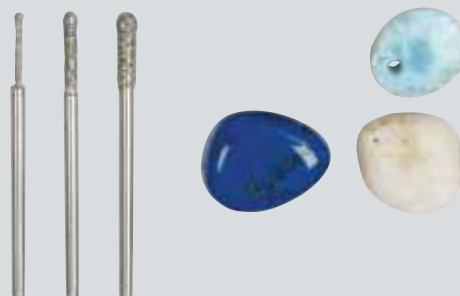
MICROMOT steel collets are hardened and thus have a high, consistent flexibility. **1** They also maintain prolonged accuracy, even after regular use (not to be compared with unhardened, 4-slit collets and those made of brass or aluminium). The triple slit collet, **2** which is much more difficult to produce than the 4-slit type, offers a much better load-bearing surface. **3** This is especially important for the central clamping of cutters with small shaft diameters.



Ball-shaped diamond coated grinding bits for glass and stone

For drilling and machining of glass and types of stone reaching to granite. Recommended for use on drill presses with a speed of 2,000rpm with the addition of coolant.

- NO 28 230** Ø 1.2mm 2 pieces
- NO 28 232** Ø 2.2mm 2 pieces
- NO 28 234** Ø 3.2mm 2 pieces



Angle polisher WP/E

**The smallest and finest in the world.
With 50mm rubber backing disc.**



Packed in storage case, including extensive original equipment for immediate use!

For perfect surfaces even in tight spots: Finishing blank surfaces, cleaning, rust removal, for the finishing touches after varnishing.

Balanced, powerful, quiet and long-lasting special DC motor. Quiet planetary gear in die-cast aluminium housing and continuously variable speed control (full-wave electronics) for low and constant speeds even during high contact pressure.

Main housing of glass-fibre reinforced POLYAMIDE with soft component. Securely stored in stylish case made of high-grade polypropylene with original equipment for immediate use. Rubber backing disc with hook and loop fastening, polishing sponge (medium hard), lambswool polishing disc, polishing felt for metals and non-ferrous metals (medium hard), 12 sanding discs K 2000 and NIGRIN polishing emulsion (75ml) as well as a microfibre cloth.

Technical data:

220 – 240V. 100W. 800 – 2.500rpm. Length 270mm. Weight 720g. Class 2 insulation.

NO 28 660

Accessories for the Angle polisher WP/E

Rubber backing disc



For use with polishing sponge, lambswool polishing disc, felt disc, sanding discs and sanding fleece. Ø 50mm. With hook and loop fastening.

NO 28 548 1 piece

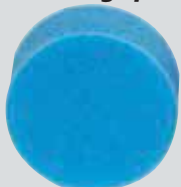
Polishing felt, medium hard



For polishing metals (e.g. stainless steel, brass, copper). With hook and loop fastening. Ø 50mm.

NO 28 666 2 pieces

Polishing sponge (blue = medium hard)



For applying polishing emulsion to painted and metal surfaces and subsequent polishing. With hook and loop fastening. Ø 50 x 25mm.

NO 28 662 2 pieces

Super-fine sanding discs grain 2000



Silicon carbide discs for adding the finishing touches to paint or removing varnish runs and inclusions. With hook and loop fastening. Ø 50mm.

NO 28 670 12 pieces

Lambswool polishing disc



High quality, dense lambswool for polishing scratch-proof paints. With hook and loop fastening. Ø 50mm.

NO 28 664 2 pieces



Microfibre cloth

For final cleaning of polished surfaces. Fine-meshed without seam. 20 x 20cm.

NO 28 678 2 pieces

Engraving device GE 20



With 20mm collar for all MICROMOT drilling and milling machines in operation with steel collets.



Note:
Professional drill/grinder IBS/E and clamping jaws are not included in the scope of delivery.

For engraving letters, numbers and individual shapes in metal, plastic, glass or stoneware.

For name plates, jewellery or other objects of value. Also for working with self-made stencils or commercially available templates (plants, animals, coats of arms). For small size, individual shapes, cut-outs or outline shapes, even in series.

A maximum of 14 characters can be fastened in the guide bar (template holder). Template contours are precisely to be followed using the guide marker (ball handle).

The lettering to be milled is scaled down during transfer. The transfer ratio can be set to 2:1, 3:1, 4:1 or 5:1 by simple adjustment of two screws.

The work piece is aligned and fixed on the movable guide block by means of clamping jaws (here MICROMOT clamping jaws set NO 24 256) or using a vice.

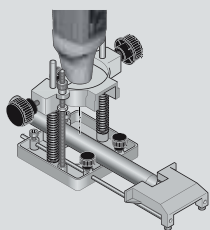
Scope of delivery:

2 sets of letters from A to Z, hyphen, full stop and dash (total 52 pieces), one each Allen key 1.5 – 3.0 and 5.0mm as well as a HEX (ball head) screwdriver 2.5mm. Includes a detailed instruction manual.

NO 27 106

Router base OFV

Made of die-cast aluminium. With plane-milled work base. For use with all MICROMOT tools with 20mm system collar.



For slotting, milling grooves and edges, chamfering. With edge guide (max. throat of 150mm), plus interchangeable circle guide. Adjustable depth stop with preselectable travel stroke. Ideal also as drilling guide for round parts using the prism in the work base.

NO 28 566

Note:
Depicted rotary tool and drilling bit are not included in the scope of delivery.



Polishing machine PM 100

For polishing and for surface treatment of precious and non-precious metals as well as plastics. For standard brushes and accessories up to 4" or 102mm.



Shaft drive via toothed belt: The motor no longer limits the working area. The slim housing around the main shaft even enables machining the surface of very long and variously shaped work pieces.

Load bearing side parts made of aluminium with milled bearing seats enable very quiet low-vibration operation.

With long, ball bearing mounted main shaft (distance from disc to disc approx. 360mm) and adjustable protective guards to work cleanly with polishing pastes. The right polishing arbor is screwed on and can be removed to use different accessories.



Powerful drive through DC motor with speed control (full-wave electronics). For high starting torque and enormous traction even during strong contact pressure.

Firm mounting with screws, but also with the attached screw clamp in horizontal or vertical position.

Included with the original equipment: muslin polishing wheel (100 x 15mm), fabric polishing wheel (100 x 15mm) and a polishing bar (paste, 25 x 28 x 92mm).

Technical data:

220 – 240V. 140W. 50/60Hz. Variable speed of 1,000 – 3,100rpm. For polishing discs up to max. Ø 102mm or 4". Size L 360, W 220, H 250mm. Weight approx. 5kg. Class 1 insulation.

NO 27 180

Accessories for Polishing machine PM 100

Treated muslin polishing wheel, stiff (100 x 15mm)



Impregnated and especially stiff. For preliminary and shine polishing of gold, silver, platinum, copper, brass, stainless steel and plastic. With bore hole for polishing arbor. Use with polishing paste or polishing emulsion, only.

NO 28 000

Bleached muslin polishing wheel, soft (100 x 15mm)



For high shine polishing of gold, silver, platinum, copper, brass, stainless steel and plastic. Adapts to the work piece contour and is particularly suitable for polishing curves and radii. With bore hole for polishing arbor. Use with polishing paste or polishing emulsion, only.

NO 28 002

Universal polishing paste (80g), made from polishing compound and wax



For use with all polishing accessories specified here. Particularly suitable for polishing and high shine polishing of precious and non-precious metals as well as plastics. Also for freshening tarnished aluminium, copper or brass.

NO 28 008

Felt cloth polishing disc (100 x 15mm)



White polishing felt for high shine polishing of smooth surfaces on metals (e.g. gold, silver, brass, aluminium). High lateral stability and durability. For very even polishing results. With bore hole for polishing arbor. For use with all polishing pastes.

NO 28 004

Microfibre polishing wheel, 15-ply (100mm)



Very soft. For shine polishing of precious and non-precious metals as well as plastics. Especially suitable for tight curves, radii and spots difficult to access which cannot be reached with rigid discs. 15-ply microfibre cloth with bore hole for polishing arbor. For use with polishing paste or polishing emulsion, only.

NO 28 006

Precision lathe PD 250/E. The new generation with



For face, longitudinal and taper turning, thread-cutting. For mach plastic. Mounting flange for fastening the mill/drill head PF 230.



Centre distance of 250mm. Swing 70mm. Height over cross slide 46mm.

Machine bed: Of cast iron, wide-legged shape and prism slides. For vibration-free work even at high loads. Rear flange for mounting the mill/drill head PF 230. Covered lead spindle.

Headstock: Of die-cast aluminium. Precision bearing mounted main spindle (run-out without chuck 1/100 mm) with 10.5mm opening. Chuck side 70mm hollowed to 14mm. With MK 2 bore. Rotary switch for engaging automatic feed via lead and feed spindle (optionally 0.05 or 0.1mm/rev.).

Tailstock: Of die-cast aluminium. Spindle \varnothing 20mm with bore MK1, retractable up to 30mm. With millimetre scale and live centre.

Support: Bed carriage made of die-cast zinc. Cross slide and top slide of steel (adjustment 60 resp. 45mm). Turning tool post for cutting tools size 8 x 8mm.

Drive: Quiet DC special motor with 3-stage belt drive for 300 – 900 and 3,000rpm. With additional speed control (full-wave electronics)

continuously adjustable from 100 – 300 or 1,000rpm, depending on belt ratio. Clockwise - anticlockwise rotation. Main switch with emergency-stop function and restart protection.

Lathe chuck: High quality 3-jaw chuck as per DIN 8386 Class 1 (concentricity tolerance 0.04mm). Capacity through reversing jaws from 2 – 90mm. Including lathe chuck guard with safety shutdown.

Handwheels: Of aluminium, with adjustable scale ring (1 division = 0.05mm, 1 revolution = 1mm).

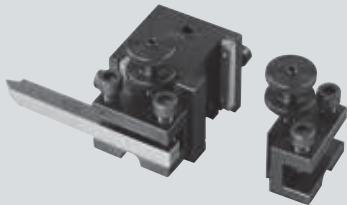
Thread cutting device: With change gears for LH and RH threads of the most important metric pitches (0.5 – 0.625 – 0.7 – 0.75 – 0.8 – 1.0 – 1.25 – 1.5).

Other technical data: 220 – 240V. 50/60Hz. Size L 560, W 270, H 170mm. Weight approx. 12kg.

NO 24 002

machining steel, brass, aluminium and

Quick change tool post - easy to use!



For quick tool change and easy height adjustment. Includes 2 tool holder elements.

NO 24 026

Individual quick change tool holder

Fits the above quick change tool post.

NO 24 024 piece



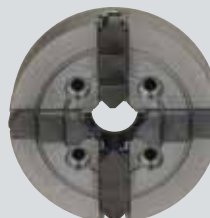
Collet set with ER 20 collets: For true concentric accuracy. 2 – 10mm.



For high precision machining of round parts. The collet set is mounted instead of the lathe chuck. Including 8 collets (2.0 – 2.5 – 3.0 – 4.0 – 5.0 – 6.0 – 8.0 and 10mm).

NO 24 038

4-jaw chuck with independent jaws



For clamping angular and asymmetrically shaped work pieces. Ø 75mm. Capacity up to 80mm.

NO 24 036

Centre turning attachment. For highest accuracy with high rotational precision.



This includes: 1 face plate, 2 fixed MK 1 (short) centres and 1 drive dog.

NO 24 014

Dividing attachment TA 250

For the accurate machining of circular work pieces and manufacturing of gear wheels. Complete with two dividing discs (40 and 48 teeth) for divisions 2 – 3 – 4 – 5 – 6 – 8 – 10 – 12 – 16 – 20 – 24 – 40 and 48. Taper is the same size as the main spindle of the lathe PD 250/E. With fit for the lathe bed and for horizontal mounting (e.g. on the cross slide). Including



matching nuts and screws for fixation in the MICROMOT standard T-slots (12 x 6 x 5mm).

NO 24 044

Professional gear chuck with MK 1



For the tailstock of the PD 250/E. Capacity up to 10mm.

NO 24 020

Fixed steady for longer work pieces



Especially for boring. Also required, if the tailstock cannot be used to counter. Capacity up to Ø 40mm.

NO 24 010

MICRO Miller MF 70/CNC-ready



The proven MICRO Miller MF 70. With step motors for axes X (transverse), Y (lengthwise) and Z (high) instead of hand-wheels.

Interesting for users who already own a control unit or would like to purchase one from another provider on the market.

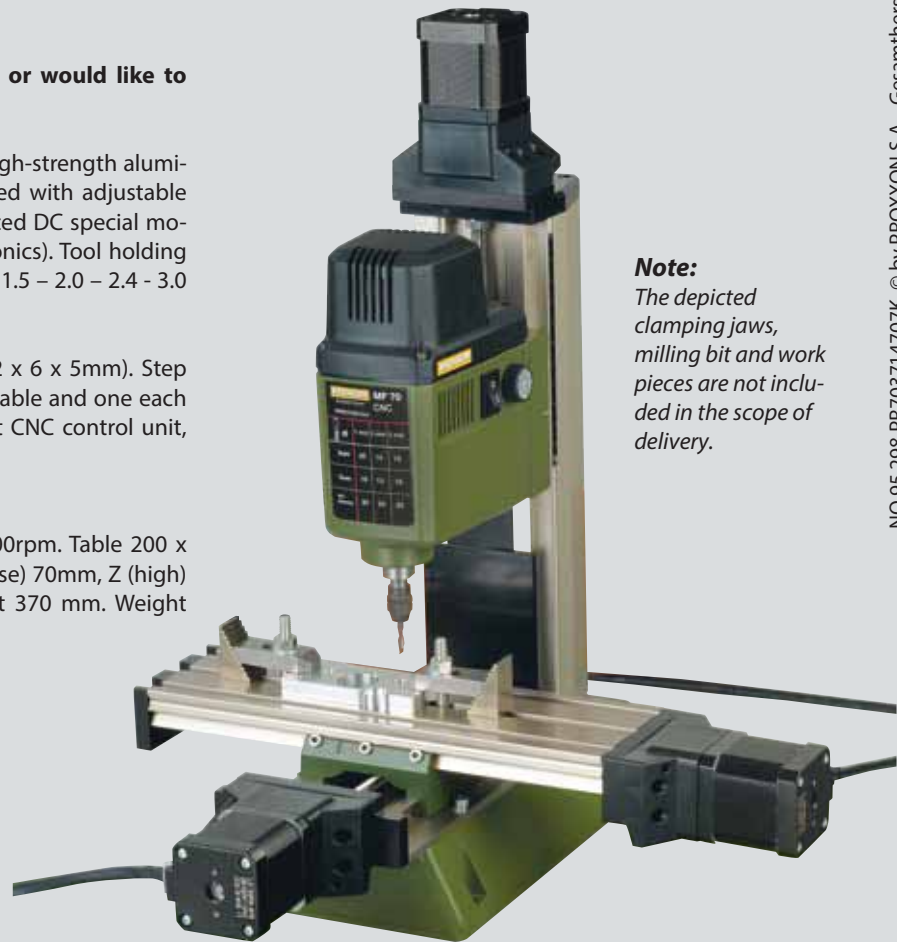
Stable grey cast iron machine base. Compound table of high-strength aluminium (surface compacted). All axes are play-free and fitted with adjustable dovetail slides. Die-cast aluminium headstock with balanced DC special motor. Continuously variable speed control (full-wave electronics). Tool holding through triple slit MICROMOT steel collets (1 each of 1.0 – 1.5 – 2.0 – 2.4 – 3.0 and 3.2mm).

Table fitted with 3 T-slots of the MICROMOT standard (12 x 6 x 5mm). Step motor and reference point switch with 2.2m connecting cable and one each standard plug (SUB-D 9POLE) for X, Y and Z axis. Without CNC control unit, without CNC software.

Technical data:

220 – 240V. 100W. 50/60Hz. Spindle speeds 5,000 - 20,000rpm. Table 200 x 70mm. Travel distances X (transverse) 130mm, Y (lengthwise) 70mm, Z (high) 70mm. Resolution of step motors 0.005mm. Total height 370 mm. Weight approx. 7 kg.

NO 27 112



Note:

The depicted clamping jaws, milling bit and work pieces are not included in the scope of delivery.

Also available individually: The compound table KT-70/CNC-ready!

With 2 step motors for the axes X (transverse) and Y (lengthwise). For other technical data, see the description of the MICRO Miller MF 70/CNC-ready.

NO 27 114

Splash guard and chip collecting tray

For the precision lathe FD 150/E

Made from 1.5mm thick sheet metal, powder-coated. Bevelled edges at the front and back enable easy cleaning. Pre-drilled mounting holes and raised base to secure stability of the FD 150/E. L 400 x W 165 x H 140mm. The lathe depicted here is not included in the scope of delivery.

NO 24 156



**PROXXON –
The fine tool company!**

www.proxxon.com